

Stock Code: **MHU15007518-DP**

MHU15007518-DP 1.5 x 0.75 x 457 Ultra

STAMPING DETAILS:

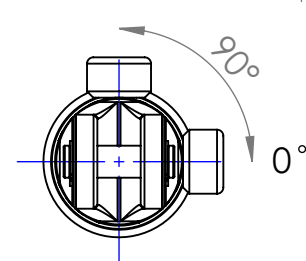
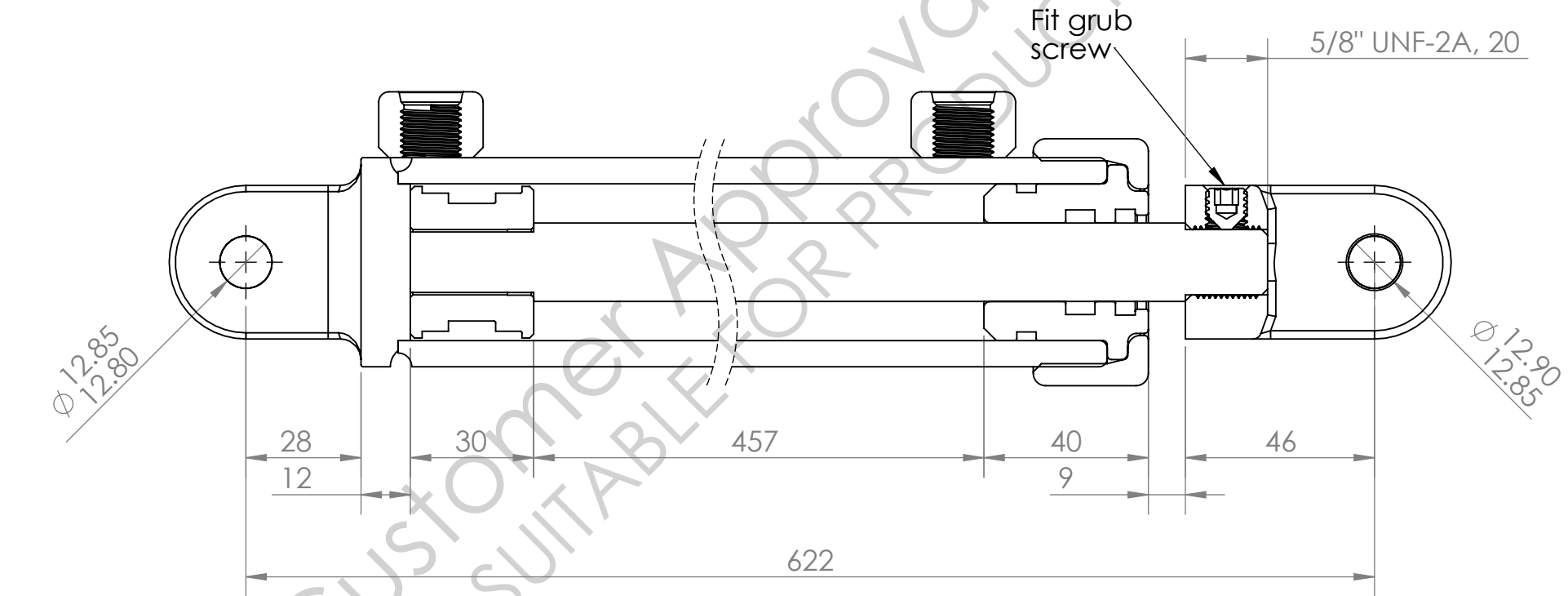
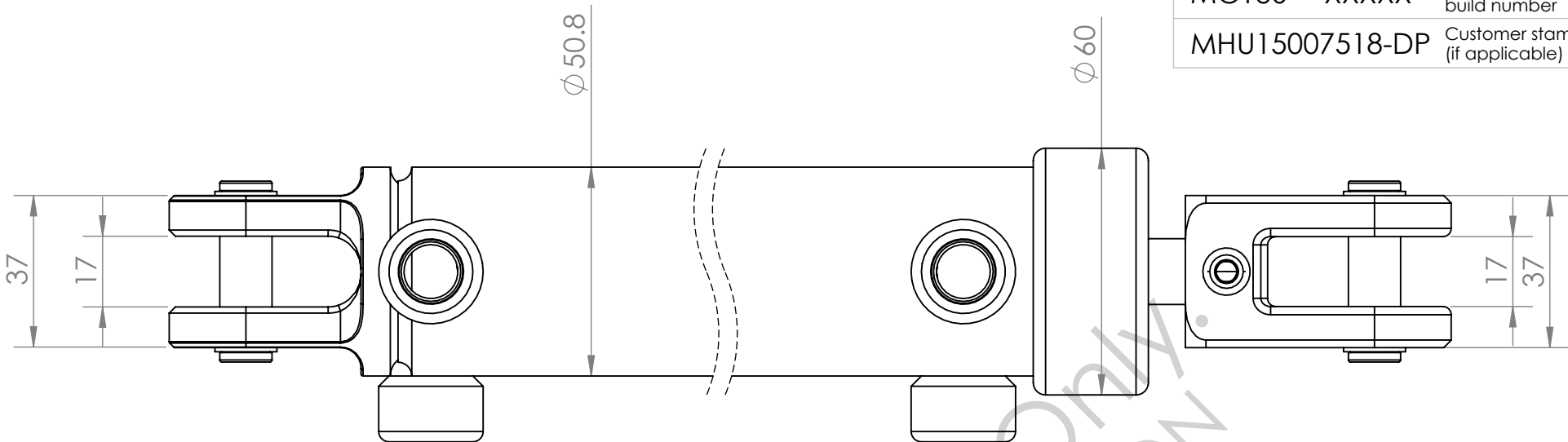
Stamping Type:	Pin	
MOTUS	XXXXX	"X" Refers to MOTUS 5 digit build number
MHU15007518-DP	Customer stamping text (if applicable)	

Company:	C&M	
Cylinder Name: (if applicable)	MHU15007518-DP	
Cylinder Type:	Ultra	DA
Operating Pressure:	4000 PSI	
Safety Rating:	2.5 : 1	
Weight:	6.47	kg

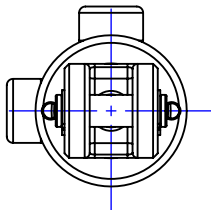
Motus Decal:	Yes	
Paint/Finish:	Charcoal	
Seal Kit :	6106834	

Bore Dia / Finished Length	Ø 1.5"	520	mm
Wall Thickness :	1/4		
Shaft Dia / Finished Length	Ø 0.75"	556	mm
Material :	1045		
Piston Thread Details:	Ø 0.63	30	mm

BASE	SPEAR
Mount: Clevis Base BFCL15040M-0.5 Part No: 6007614	Mount: Threaded Clevis CL0.5-17-46 Part No: 6006283
Pin Size Ø : 0.5"	Pin Size Ø : 0.5"
Bush Type: - L Bore: No	Bush Type: - L Bore: No
Bush Size: -	Bush Size: -
Base Bearing: -	Shaft Bearing : -
Grease Nipple: -	Grease Nipple: -
Port: 9/16 Female UNO -6	Port: 9/16 Female UNO -6
Orientation: 0 & 90	Orientation: 0 & 90
Drill Size: 3 mm	Drill Size: 3 mm
Drill Distance: 8 mm	Drill Distance: 30 mm



Base View



Front View

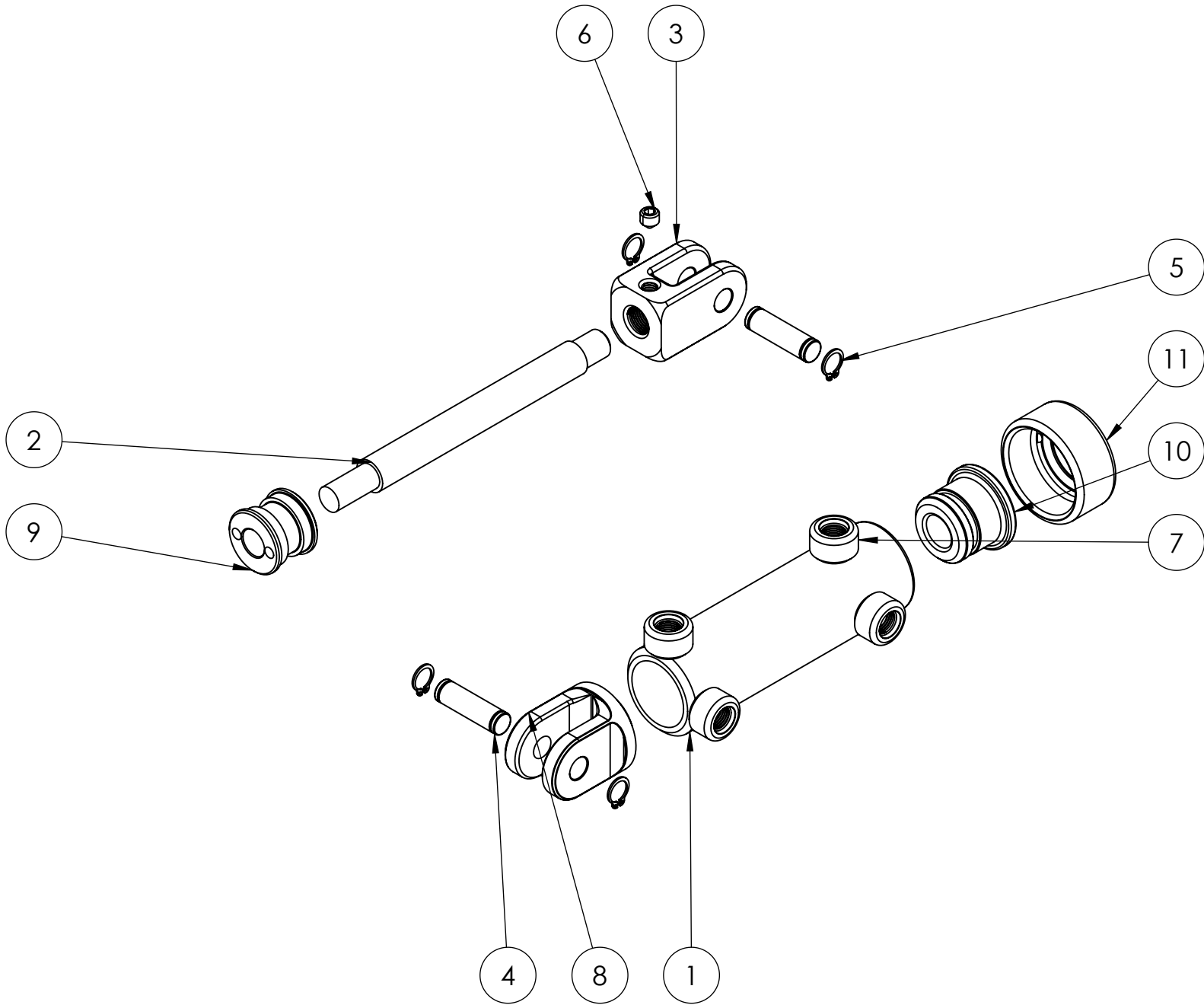
BUILD NUMBER:	
Sales Order Number:	
Invoice Number:	
Customer Order Number:	
Order Date:	
Date of Dispatch:	
Quantity:	
Multiple order:	of:

Drawing Approval (Customer)		
Name:	Signature:	Date:

Stroke :	457	±3 mm
Closed Centres :	622	±3 mm
Open Centres :	1079	±3 mm

Special Instructions:

ITEM NO.	PART NUMBER	DESCRIPTION	QTY.
1	-	5814- BARREL	1
2	-	5814- SHAFT	1
3	6006283	CL0.5-17-46 Threaded Clevis-5/8UNF	1
4	6007611	1-2" Pin	2
5	6007612	1-2" External Circlip	4
6	9009427	3/8 UNF Grub Screw	1
7	6006856-2	-6 UNO FM Port 9/16	4
8	6007614	BFCL15040M-0.5 Pin	1
9	6006208-1	WR150-38P Piston	1
10	6008791	UH150075 Ultra Head	1
11	6008790	UC150 1.5" Ultra Cap	1



Note:

- All imperial threads are machined to 2A, 2B specification
- All metric threads are machined to 6g, 6H specification
- All pin holes machined to D9 tolerance unless specified otherwise
- All machine surface finishes are 3.2µm Ra
- Close/Open centres to ±3mm tolerance